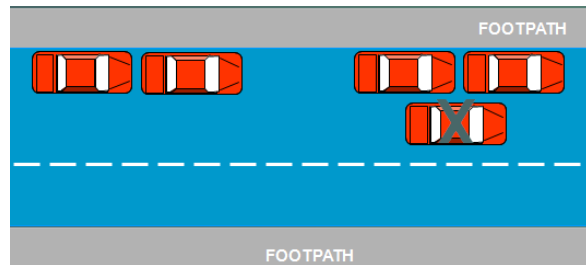


## DOUBLE PARKING

A driver commits an offence by stopping a vehicle on a road when another vehicle is parked between the driver's vehicle and the kerb.

## NOT PARALLEL PARKED

A driver commits an offence by stopping a vehicle on a road when the left hand wheels of the vehicle are not as near as practical to the kerb (no more than 300mm from the kerb)

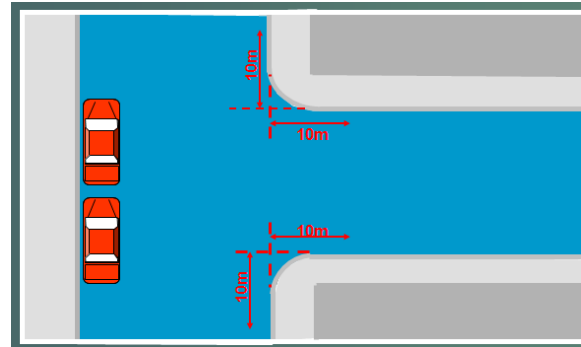


**Don't just think of the safety of your child.**

**Remember other parents' children use the road too!**

## 10 METRE RULE

A driver must not stop within 10 metres from the nearest point of an intersecting road at an intersection / T-Intersection without traffic lights.



[holdfast.sa.gov.au](http://holdfast.sa.gov.au)  
Brighton Civic Centre  
24 Jetty Road, Brighton SA 5048  
PO Box 19, Brighton SA 5048

P 08 8229 9999  
F 08 8298 4561  
E [mail@holdfast.sa.gov.au](mailto:mail@holdfast.sa.gov.au)

# SCHOOLS, STUDENTS AND TRAFFIC

## PARKING RESTRICTIONS AT SCHOOLS ARE FOR THE SAFETY OF ALL CHILDREN

The Australian Road Rules provide a variety of parking restrictions at and near schools to achieve a safer environment for all children.

These restrictions are designed to optimise traffic safety and movement.



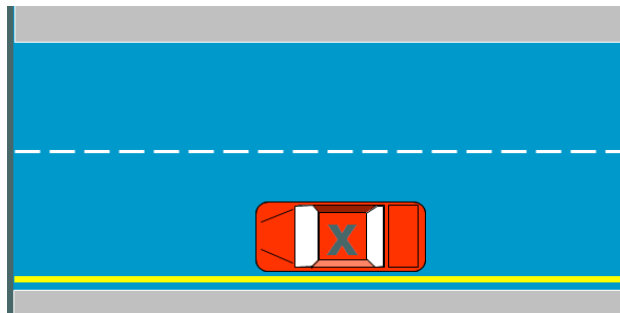
## NO STOPPING ZONE

This zone is usually located adjacent to school entrances. This is to ensure that a clear view of the road and footpath is maintained for pedestrians and drivers.



## CONTINUOUS YELLOW EDGE LINE

A continuous yellow edge line has the same requirements as a no stopping sign.



## NO PARKING ZONE

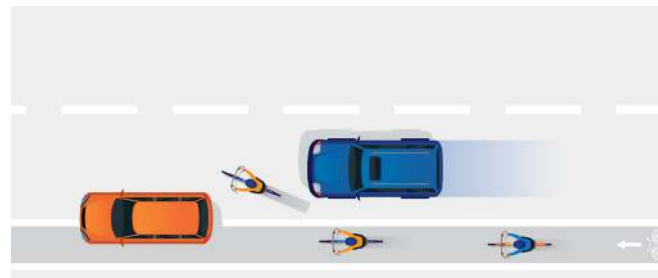
Drivers are allowed to stop in this zone for a maximum of **two (2) minutes from the time of stopping** to pick up or drop off passengers.

If the passenger is not at the kerb the driver must vacate the zone immediately.



## BICYCLE LANES

Drivers are committing an offence if their vehicle becomes stationary, even though the motor is running and the driver remains seated in the vehicle or waiting in a queue to use a legal parking zone.

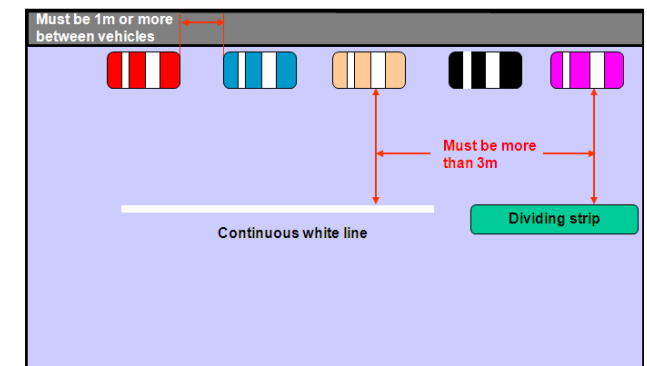


## QUEUING TO PARK

Drivers are committing an offence if their vehicle becomes stationary even though the motor is running and the driver remains seated in the vehicle or waiting in a queue to use a legal parking zone.

## WHITE CENTRE LINE

A vehicle must not stop or park at anytime alongside a white centre line.



**WARNING:** It is not a defence if you stop in these zones to answer a mobile phone, queuing to park or dropping off or picking up passengers